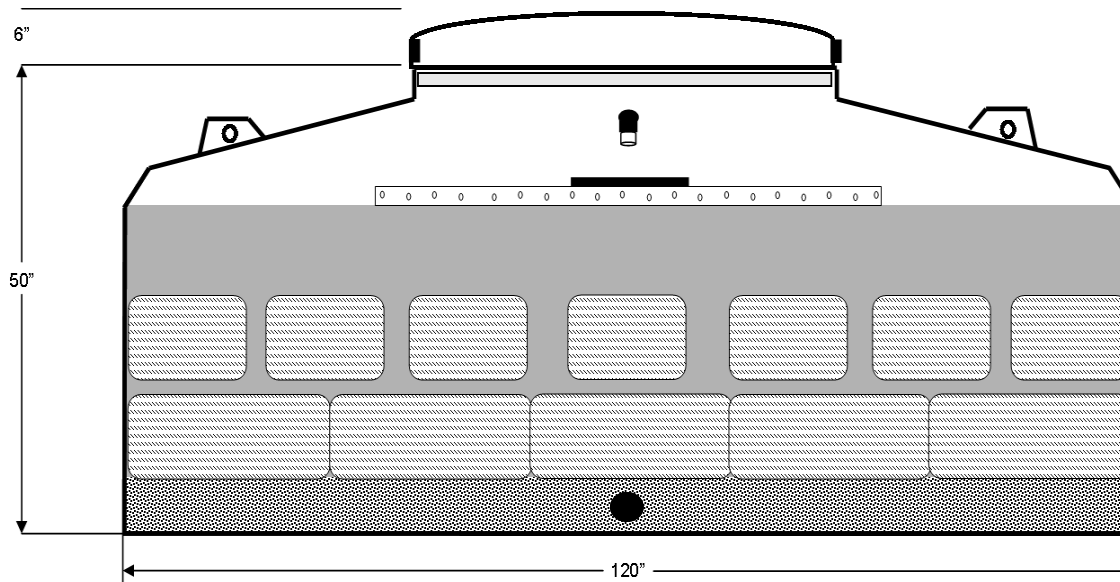


View 1: PBF4-P Cross Section, Width



View 2: Module Dimensions, Length

Eco-Pure Peat Moss Biofilter
Model: PBF4-P
 Pre-Plumbed Internal Pump
 Transmission Line

Notes:

- Internal pump transmission line = 5' TDH, Total Dynamic Head
- Climatic conditions must be taken into design consideration

Date:	5-13-10
Description:	PBF4-P
Scale:	Not to scale

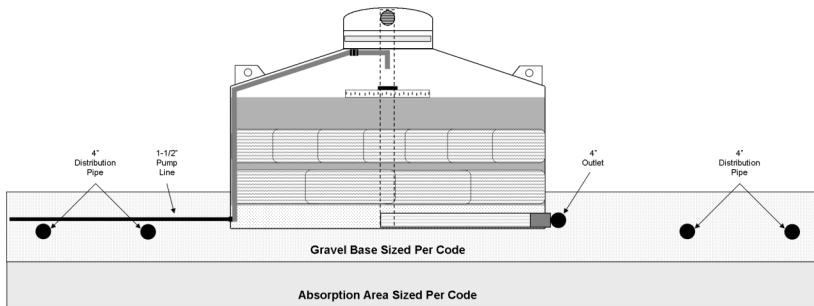
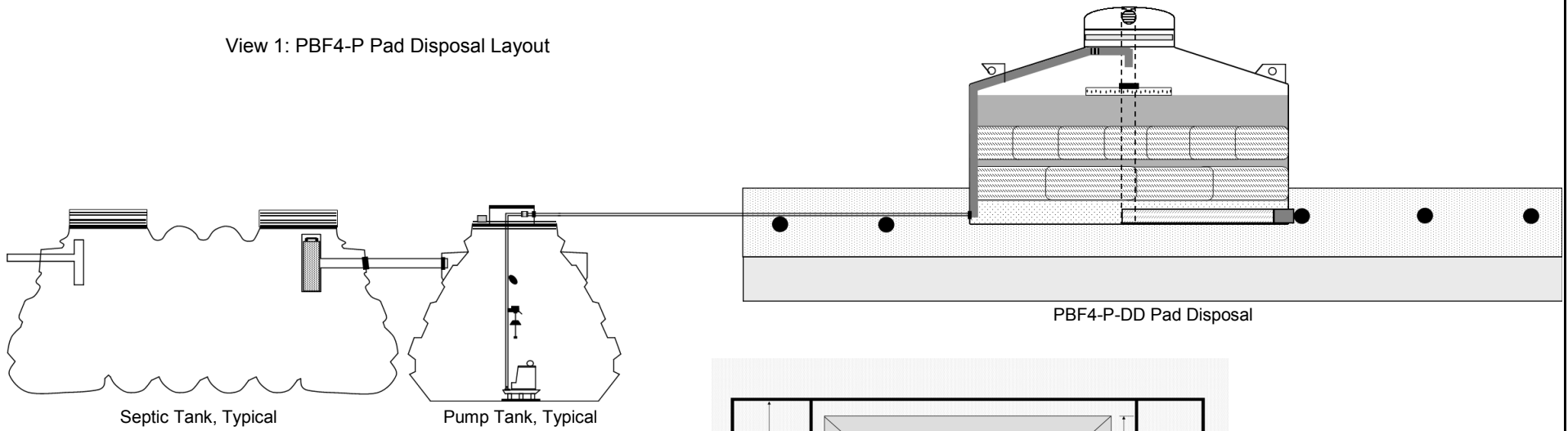


Customer Service: (813) 643-6094
 Fax: (813) 643-6014
www.planetcareinc.com
 Planet Care, Inc.
 Pulaski, VA 24301 USA

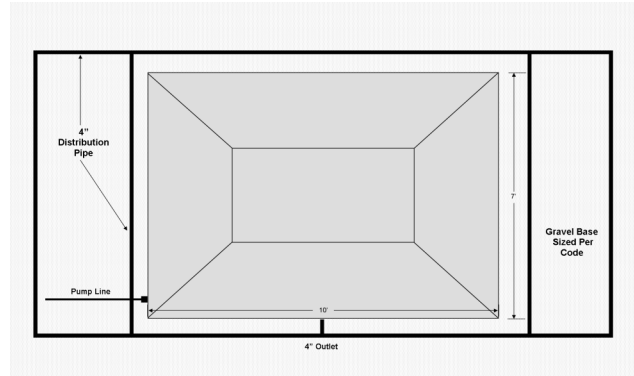
© Planet Care, Inc. 2010

This document is intended to be a guide to designers, installers and owners of the Eco-Pure Peat Moss Biofilter system and should be used only to supplement your state and/or local regulations. Please refer to your state and/or local onsite wastewater treatment and disposal regulations for details pertaining to your systems design, installation and maintenance requirements. All systems incorporating the Eco-Pure Peat Moss Biofilter must be designed by a state registered Professional Engineer or an approved system designer. The Eco-Pure Peat Moss Biofilter must be installed per the manufacturer's Installation Guide, January, 2010. Only factory trained personnel may install the Eco-Pure Peat Moss Biofilter. Routine inspection and maintenance must take place at least once per year. Maintenance must be performed per the Eco-Pure Maintenance Manual, January, 2010. Only factory trained service providers may perform maintenance.

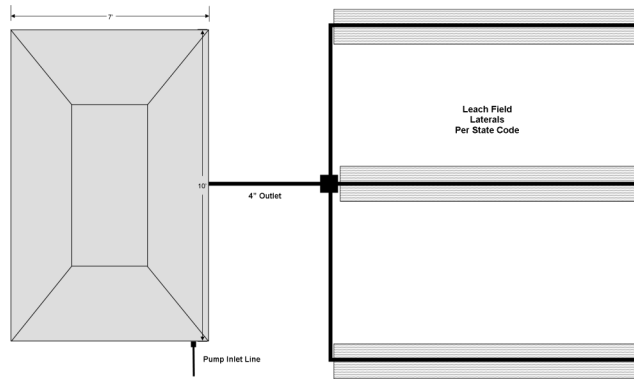
View 1: PBF4-P Pad Disposal Layout



View 2: PBF4-P Pad Disposal, Example, Cross Section



View 3: PBF4-P Pad Disposal, Example



View 4: PBF4-P Lateral Disposal, Example

**Eco-Pure Peat Moss Biofilter
Model: PBF4-P**
Pre-Plumbed Internal Pump
Transmission Line

- Notes:**
- Internal pump transmission line = 5' TDH, Total Dynamic Head
 - Climatic conditions must be taken into design consideration

Date:	5-13-10
Description:	PBF4-P Pad
Scale:	Not to scale



Customer Service: (813) 643-6094
 Fax: (813) 643-6014
 www.planetcareinc.com
 Planet Care, Inc.
 Pulaski, VA 24301 USA

This document is intended to be a guide to designers, installers and owners of the Eco-Pure Peat Moss Biofilter system and should be used only to supplement your state and/or local regulations. Please refer to your state and/or local onsite wastewater treatment and disposal regulations for details pertaining to your systems design, installation and maintenance requirements. All systems incorporating the Eco-Pure Peat Moss Biofilter must be designed by a state registered Professional Engineer or an approved system designer. The Eco-Pure Peat Moss Biofilter must be installed per the manufacturer's Installation Guide, January, 2010. Only factory trained personnel may install the Eco-Pure Peat Moss Biofilter. Routine inspection and maintenance must take place at least once per year. Maintenance must be performed per the Eco-Pure Maintenance Manual, January, 2010. Only factory trained service providers may perform maintenance.